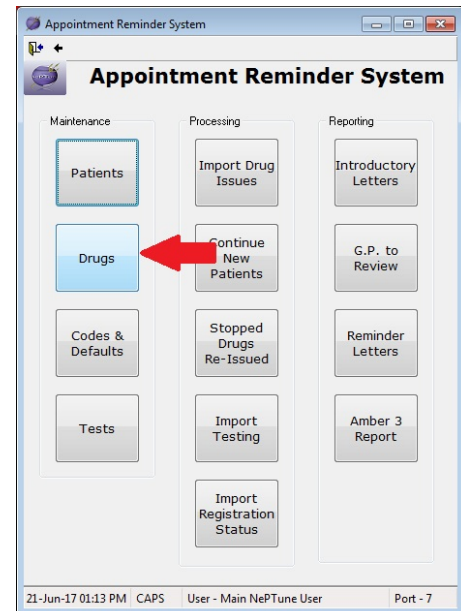


Adding New Drugs to Neptune

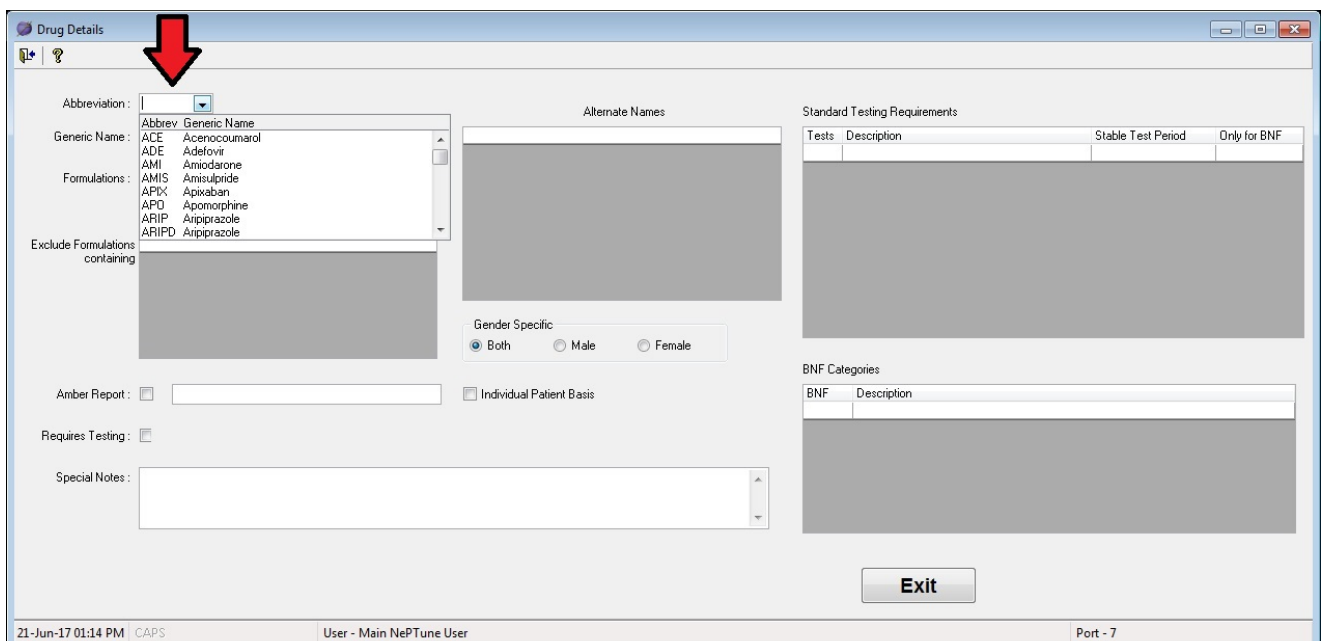
Before starting this process please ensure all the data has been gathered, see Appendix 1 and 2

Process for adding drugs

From the Appointment Reminder Screen, Click on **Drugs**



Below is the **Drug Details** screen. If you click on the drop down menu **“Abbreviation”** you can see a list of all the drugs in Neptune, and their abbreviations. When you are adding your own drugs, you need to decide on an abbreviation. You should **start the abbreviation with an X**; this will make it easier for you to see which drugs you have added manually, and also lists them all at the bottom, as the list is alphabetical.



As an example, let's say you wanted to add Terbinafine. First, you need to **type an abbreviation into the box**. As you can see from the screenshot below, we used XTER as the abbreviation.

Next, you need to **enter the generic name for the drug**. You can also add **alternate names**, such as brands, and **exclude any formulations** you don't want to monitor. For Terbinafine, we excluded creams and sprays, as we only want to monitor the tablets

Tick the box that says **"Requires testing"** so that Neptune will flag patients who are overdue testing. **Don't tick "Amber Report"** as this will include the drug in your quarterly audits.

Finally you need to **add your standard testing requirements**. You can either click on the drop down menu under "Tests" and select the tests you require, or you can type in the abbreviation of the test, if you know it. Then enter your stable testing period. After you have added a test, another blank row will appear underneath, allowing you to add as many tests as you need.

Once you have finished, **click Update** and Neptune will save everything you have entered. Next time you run your monthly searches, Neptune will include this drug.

Drug Details

Abbreviation : XTER

Generic Name : Terbinafine

Formulations : tablets

Exclude Formulations containing : cream, spray

Amber Report :

Requires Testing :

Special Notes : added at req of MF

Alternate Names

Gender Specific
 Both Male Female

Standard Testing Requirements

Tests	Description	Stable Test Period	Only for BNF
LFT	Liver function test	42	

BNF Categories

BNF	Description

UPDATE Delete Exit

21-Jun-17 01:15 PM CAPS User - Main NePTune User Port - 7

Appendix 1 - Check list for information required by Neptune for adding new drug

Information	Comment	Information
Generic Name		e.g. Ramipril
Brand Names	Neptune will only look for the generic name if these aren't added to the Alternative Names section	e.g. Tritace
Formulations	This provides information for the included and/or excluded sections. If all formulations are to be included then these 2 fields can be left blank	e.g. Tablet, Liquid
Tests and Stable Test Period	All the potential types of tests are needed, along with the testing period in days. See Appendix 2 for a list of possible codes. Please note there may be more than one applicable test so all will need adding.	e.g. U+E and BP
Special Notes	Add into here notes regarding when the drug was added and who requested it was added	e.g. Requested by TB, added 01/06/2018

Appendix 2 - Neptune Tests

Neptune Test Name	Description	Markers	Read Codes included in Neptune for this test
AMYL	Serum or Plasma Amylase		44CN; 44CT; XM14L; XaIRh
ANA	Autoimmune profile		43GG; XaJqo
BMI	Body mass index		22K
BONE	Bone profile		44Z2
BP	Blood pressure		2469; 246A; 246
CK	Creatine kinase		XaES5; 44HG; 44H4; 44HE
CLOT	Clotting Screen		42h0; 42QS; XaEXO
CR	Serum creatinine		XE2q5; 44J3; 44J3z; 44JD
CRP	Serum C reactive protein		XaINL; 44CS
CXR	Chest X ray		535; 535Z; FUNDHXR8
Calcium	Serum calcium level		44IC; XE2q3; 44I8; 44Z2; Xabpk; 44IC0
Chol	Serum cholesterol level		XE2eD; 44P; 44PJ
Coombstest	Coombs test		X77ZN; 437Z; 437; 4376
ECG	Electrocardiograph		XE1PZ; 321; 321Z; 3212; 321B; 32M; 321Z
ESR	Erythrocyte sedimentation rate		XE2m7; 42B6; 42B6z
Ear	Ear examination		ZV721; 73231
Eye	Eye examination		22E; ZV720; 22EZ
FBC	Full blood count	Hb	Xa96v; XE2m6; 424; 424Z; 432; 423
FSH	FSH Level		XE25J; X80Fa; XaELZ; 4434; 443h; 443i
Glucose	Blood glucose		XM0ly; 44TK; 44g1; 44f1; XE2mq; 44f ; 44g ; 44TJ; X772z
HDL	Serum HDL cholesterol level		44P5; 44PB
HbA1c	Glycosylated haemoglobin level		X772q; XaPbt; 44TL; 42W4; 42W5; 44TK; 44TJ; XM0ly
Height	Height		229; 229Z; PCNQOE1
IGF-1	Insulin-like growth factor 1		XaER3; 44AB
INR	International normalised ratio		42QE

Neptune Test Name	Description	Markers	Read Codes included in Neptune for this test
LFT	Liver function test	ALT	X771f; 44G3; XaLJx; XE2px; 44D6; 44F; 44GB; X77WP; 44G-1; 44EC
LH	Leutenising Hormone		X80Fu; XE25l; XM0lv; XaELa; 4433; 443e; 443f
Lipids	Lipids	Chol	XE2eD; 440; X772K; 44P6; 44PLO
Lithium	Serum lithium level		XE25g; 44W8; 665J
Oestradiol	Oestradiol Level		X7723; 4465; XaEQo; 4467
PHOS	Phosphate Level		XE2q4; XaDve; XaltO; 44l2; 44l9; 44h5
PSA	Prostate specific antigen		XE25C; 43Z2; 43Z22; X80QD
PTH	Serum parathyroid hormone level		XE2xc; 44A1
Prolactin	Serum prolactin level		XaELX; 443j; 4435; 443g
Proth	Prothrombin Time		XaIYg; 42Q5
Pulse	Pulse		X773s; 242; 24c; X773r; XalBo
REVIEW	Patients testing requires review		
Retic	Reticulocyte count		42X
T4	Free T4		XaERr; XaERs; 442V; 4427; 442c
TFT	Thyroid function test	TSH	XaELV; 442J; 442W; X77Wg; 442V
TSH	Thyroid stimulating hormone	442J	XaELV; 442W
Tacro	Tacrolimus Level		XalaR; XaENT; Xaay9; 44Wc; 44ul; 44uI0
Testosterone	Testosterone Level		X7728; XE2dr; XaltQ; XaL1A; 4473; 447G; 4Q2E
U+E	Urea and electrolytes	K	XE2pz; 44l; 44l4; X77Wi; EGTON22; 44JR
Urinalysis	Urinalysis		4672; 4673; 4674; 4675; 4676; 4677; 461
VitaminD	Serum 25 Hydroxy Vitamin D3 Level		44LP; XaEQa; Xabo0; 4QB47
Waist	Waist circumference		Xa041; 22NO; EGTONWA1
Weight	Weight		22A